

Viola

TEACHING RHYTHMIC INDEPENDENCE

A BOOK OF RHYTHMS AND PROGRESSIVE
MELODIES

FOR STRINGS

Book 1

BY

BOYD E. GIBSON

TEACHING RHYTHMIC INDEPENDENCE

A BOOK OF RHYTHMS AND PROGRESSIVE
MELODIES

FOR STRINGS

Book 1

BY

BOYD E. GIBSON

ISBN [0-9773901-4-4](#)

Apex Music Company
2010 NC Highway 55
Durham NC 27707

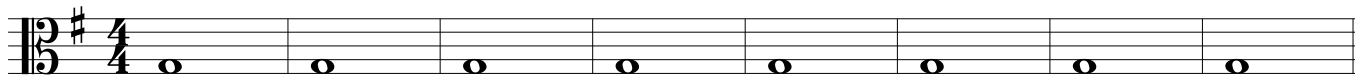
Copyright © 2012 by Apex Music Company All Rights Reserved

Apex Music Company

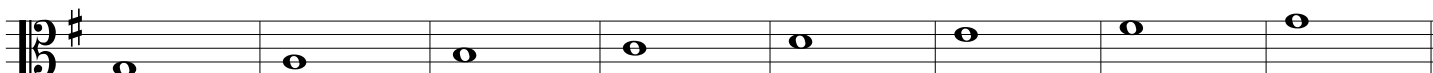
Whole Note Exercise

Flash Card No.1

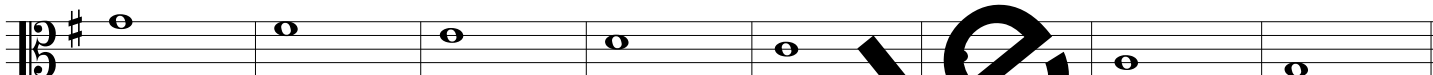
①



②



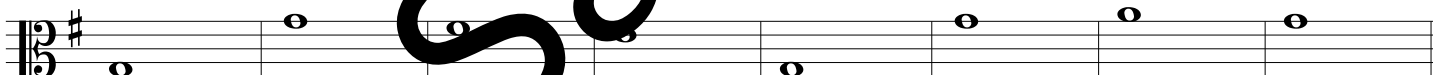
③



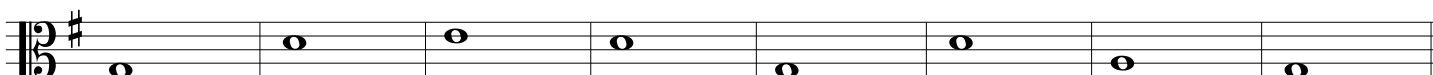
④



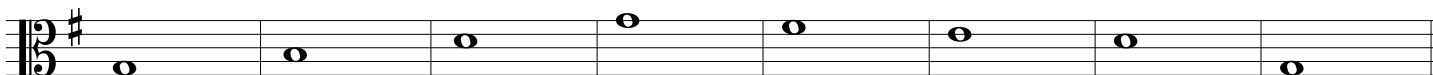
⑤



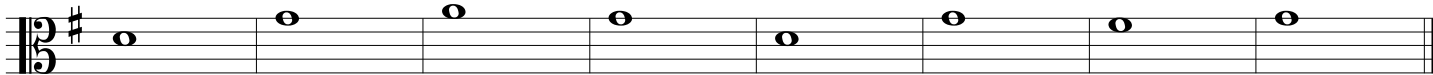
⑥



⑦



⑧



Sample

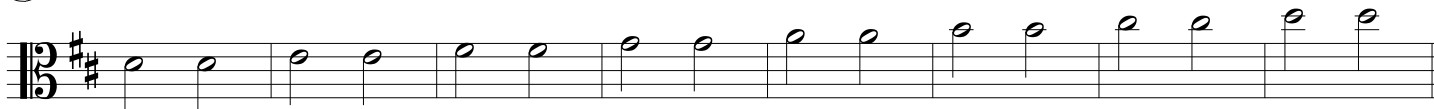
Half Notes

Flash Card 2

9



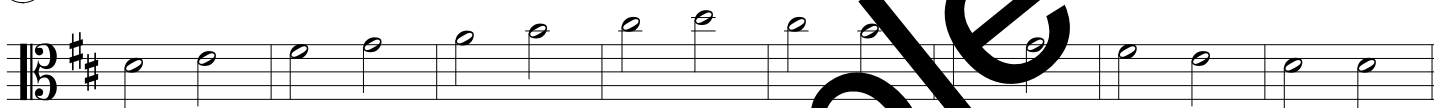
10



11



12



13



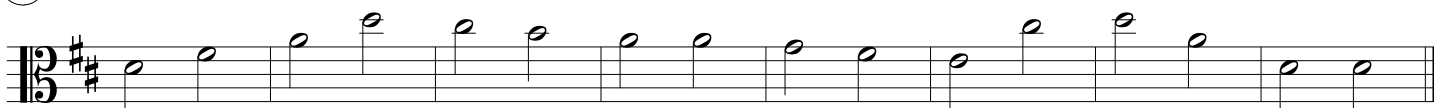
14



15



16



Sample

Half Notes & Half Note Rests

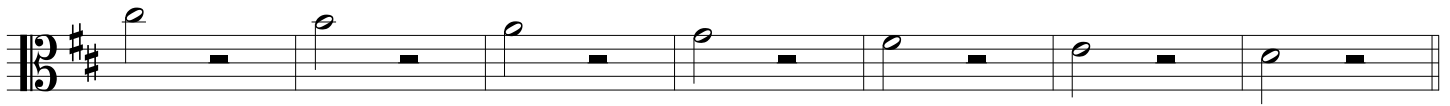
Flash Card 3

Can be played in an Ensemble with Half Notes & Half Note Rests II

17



18



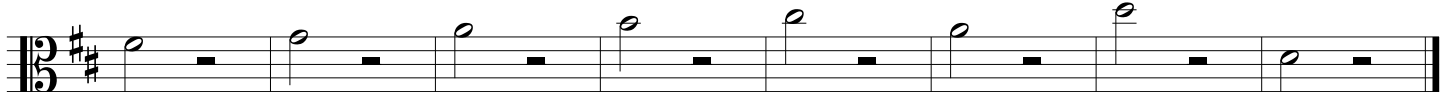
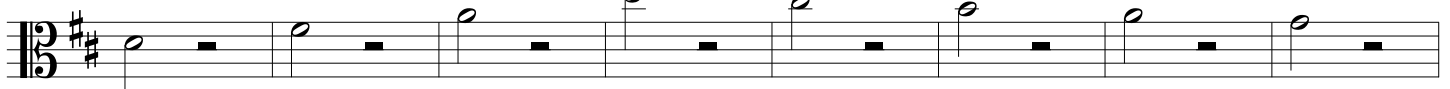
19



20



21



Sample

Half Notes & Half Note Rests II

Flash Card 4

Can be played in an Ensemble with Half Notes & Half Note Rests

22



23

Can be played as a round

2



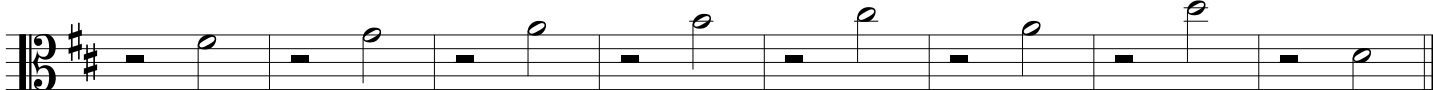
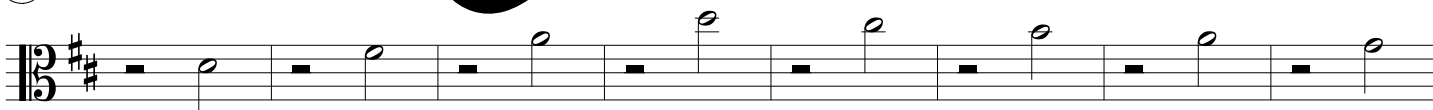
24



25



26



Quarter Note Rest on 2 & 4

Flash Card 12

Can be played in ensemble with Rest on 1 & 3

35



36



37



38

Twinkle Twinkle Little Star



39



40



Quarter Note Rest on 1 & 3

Flash Card 11

Can be played in ensemble with Rest on 2 & 4

41



42



43



44

Twinkle Twinkle Little Star



45



46



Quarter Note Rest on Beat 1

Flash Card 9

47



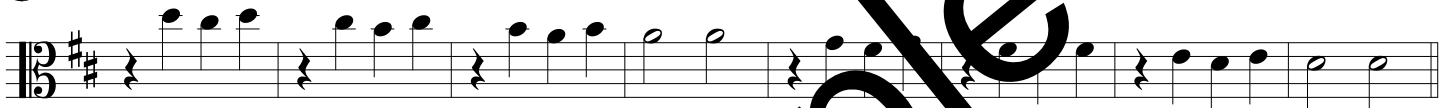
48



49



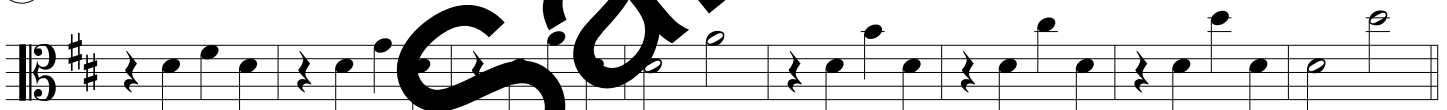
50



51



52



53



54



Sample

Quarter Note Rest on Beat 2

Flash Card 8

55



56



57



58



59



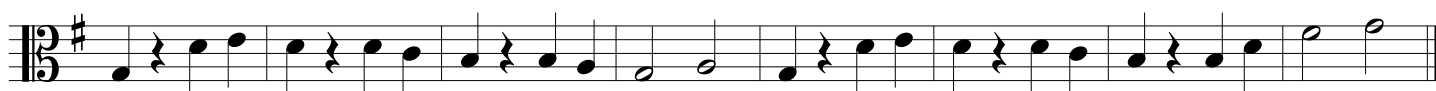
60



61



62



Sample

Quarter Note Rest on Beat 4

Flash Card 10

63



64



65



66



67



68



69



70



Half, Quarter Notes & Quarter Rest

In Rounds
Flash Card 2 & 7

71



72



73



74



Half and Quarter Notes in Rounds

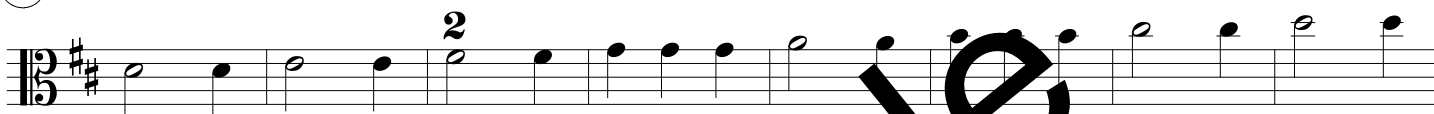
Includes O How Lovely is the Evening

Flash Card 48, 49, & 50

75



76

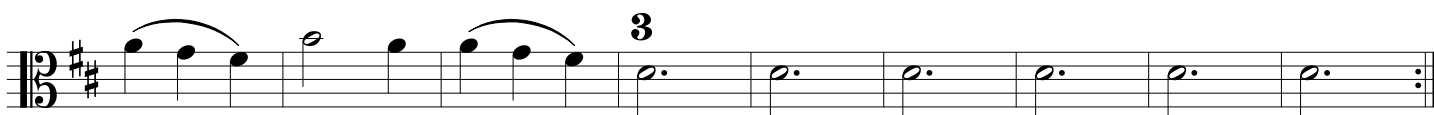


77



78

O How Lovely is the Evening



8th, Quarter, & Half Note Rhythms

Flash Card 2, 6 & 13

79



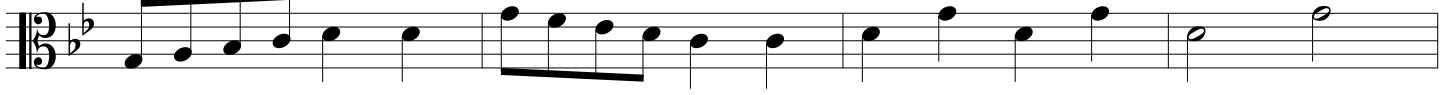
80



81



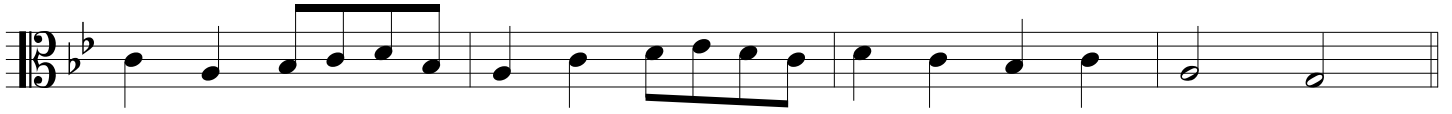
82



83



84



85



Sample

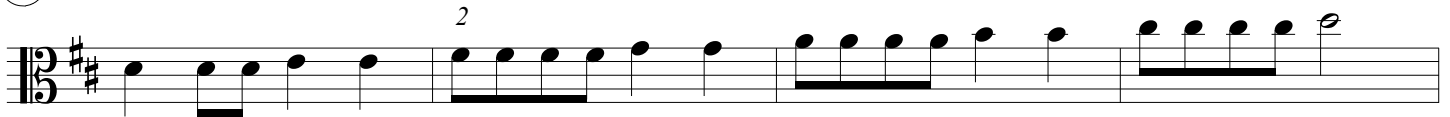
Quarter & 8th Notes in Rounds

Flash Cards 13, 14 & 37

86



87



88



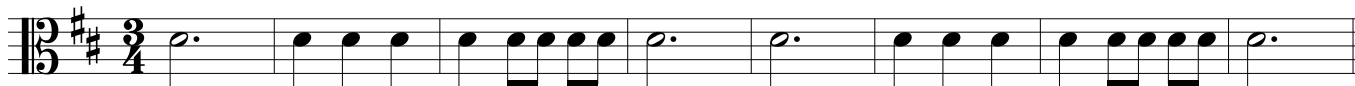
89



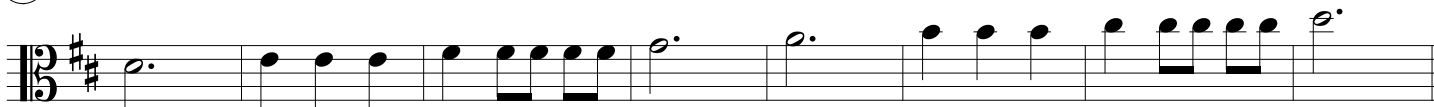
Dotted Half, Quarter and Eight Notes

Flash Card 49, 50 & 51

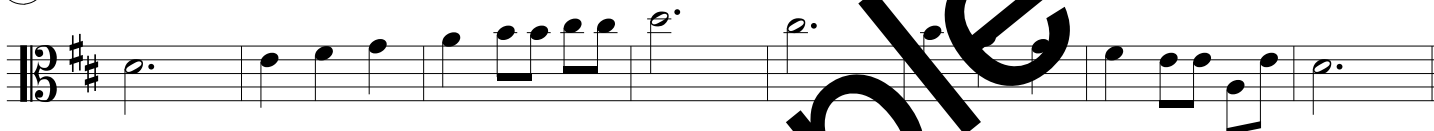
90



91



92



93



94



95



96



Dotted Half Quarter and Eight Notes

Flash Card 49, 50 & 52

97



98



99





100



101



Sample

Half, Quarter, Dotted Quarter & 8th Notes

Flash Card 6, 18, 19 & 20

Ode To Joy

108



109



110



111



112



113



114



115



116



117

Beethoven's Ode To Joy



Half, Dotted Quarter, Quarter and 8th Notes

Based on the rhythm from Haydn's String Quartet "Emperor"

Flash Card 18, 22, 23, 24 & 25

125



126



127



128



129



130



131



132



133



134



135



136



137



138



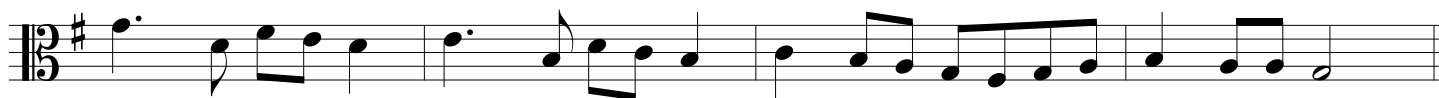
139



140



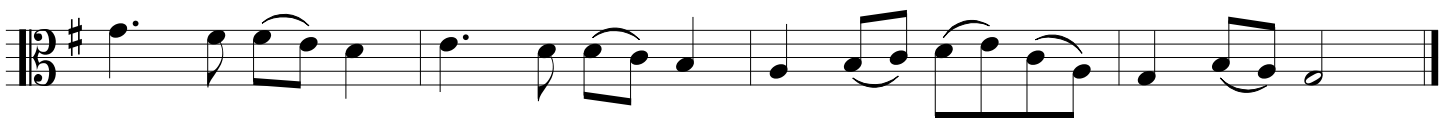
141



142

Haydn String Quartet "Emperor"





Sample

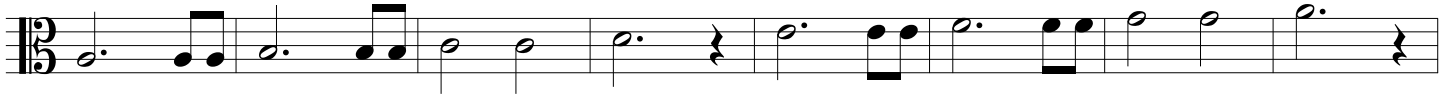
Dotted Half and Eight Notes

Flash 2, 28 & 29

143



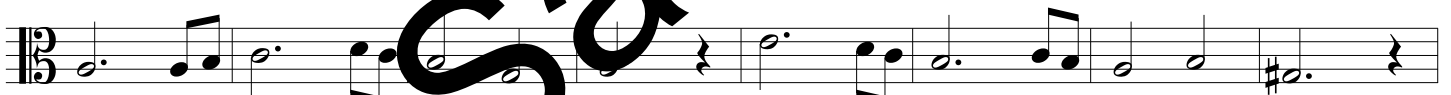
144



145



146



147



Half, Quarter & 16th Notes

Flash Card 30 & 31

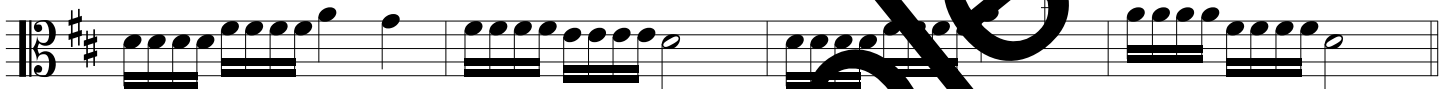
148



149



150



151

I've Been Working on the Railroad



152



153



154



Quarter, 8th & 16th Notes Mixed I

Flash Card 33

162



163



164



165



166



167



Sample

Dotted Half, 8th and 16th Notes

Flash Card 29, 33, 36 & 38

Rhythm for Vivaldi's Gloria

175



176



177



178



179

Antonio Vivaldi's Gloria



Dotted 8th & 16th Notes

Flash Card 5 & 39

180



181



182



183



184



185



186



Dotted Quarter and 16th Note Rhythm

Flash Card 6, 29 & 41

195



196



197



198



199



200



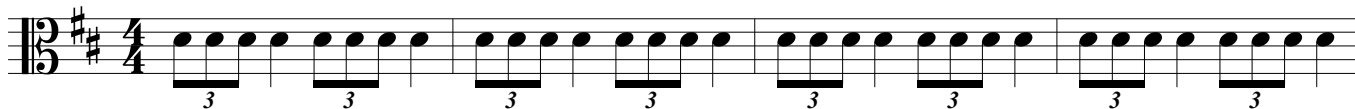
201



Triplets and Quarter Notes

Flash Card 5 & 42

202



203



204



205



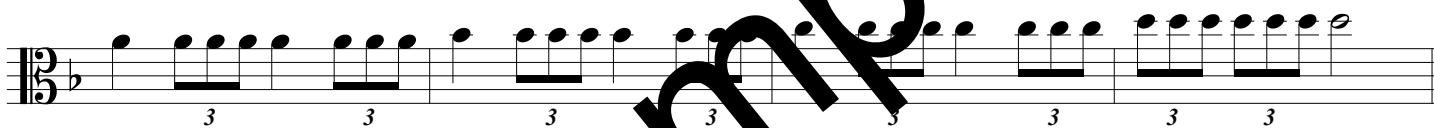
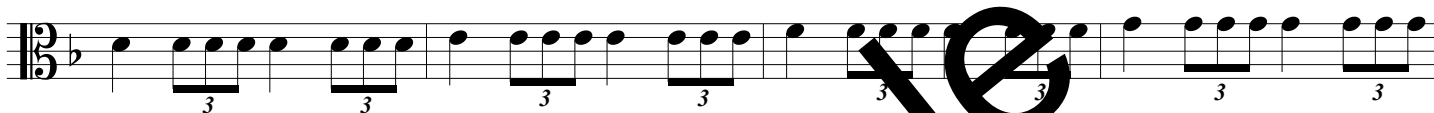
Triplets and Quarter Notes II

Flash Card 43 & 44

206



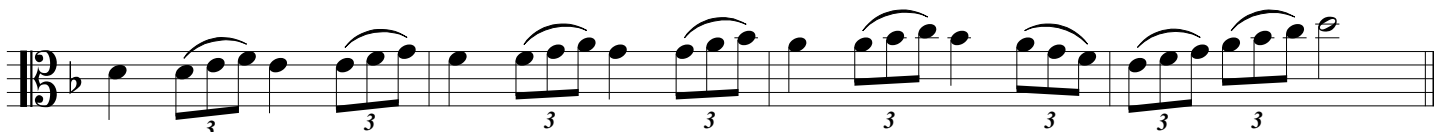
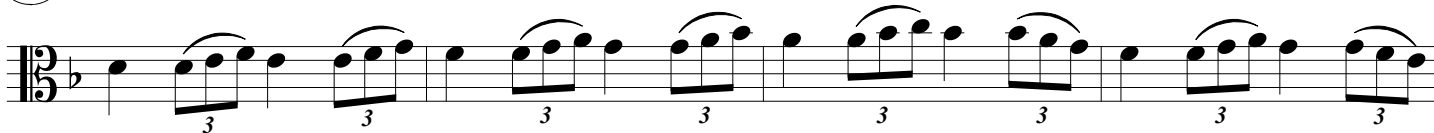
207



208



209



Syncopation

Flash Card 2 & 45

210



211



212



213



214



215



216



217



Sample

Syncopation II

Flash Card 2 & 46

218



219



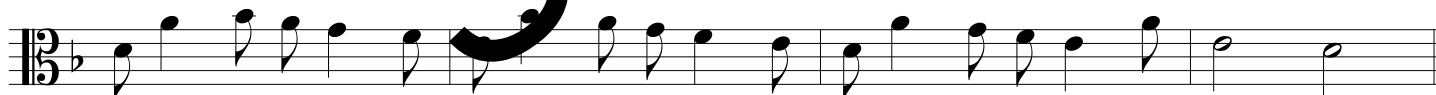
220



221



222



223



224



Counting in 2 Part I

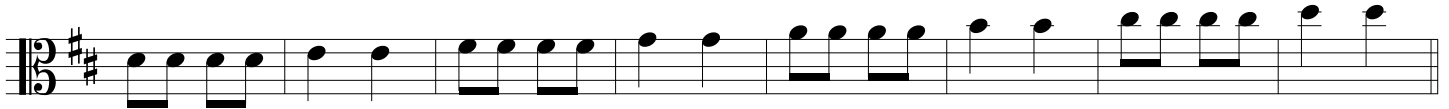
Flash Card 59 & 60

Can be played with Counting in 2 Cut Time Part 1 at the same time.

232



233



234



235



236



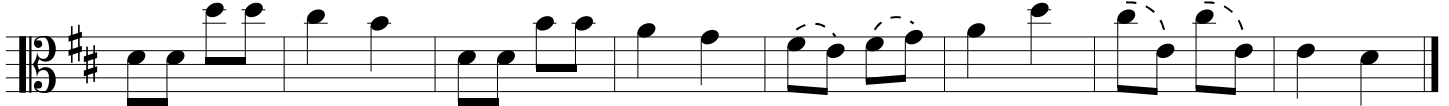
237



238



239



Sample

Counting in 2 Cut Time Part I

Flash Card 53 & 54

240

Can be played with Counting in 2 Part 1 at the same time.



241



242



243



244



245



246



247



Counting in 2 Part II

Flash Card 59 & 63

Can be played with Counting in 2 Cut Time Part II at the same time.

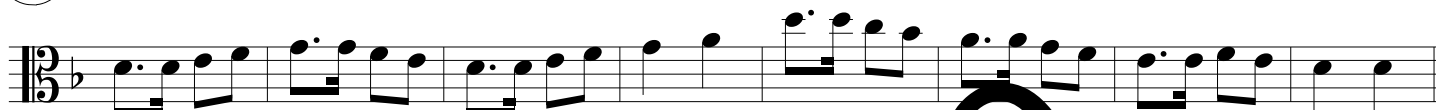
248



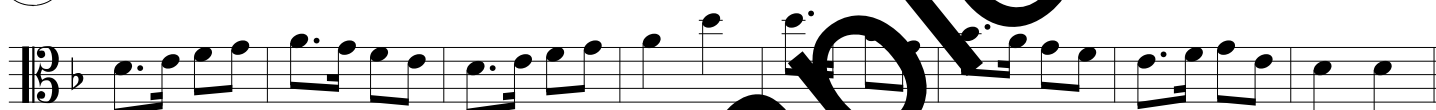
249



250



251



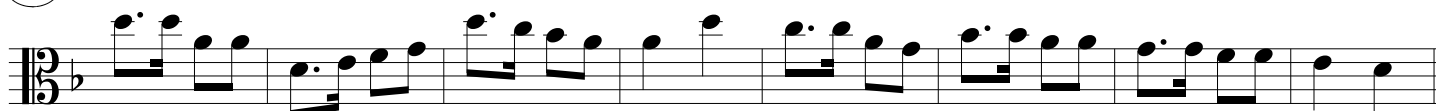
252



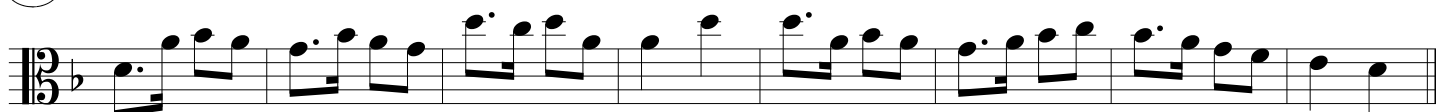
253



254



255



Counting in 2 Cut Time II

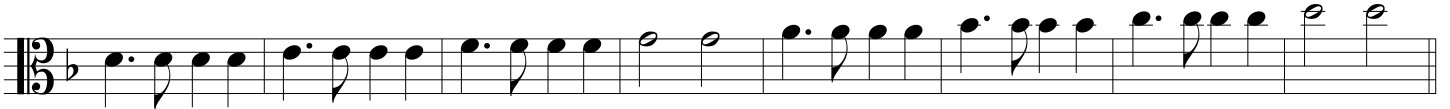
Flash Card 53 & 57

Can be played with Counting in 2 Part II at the same time.

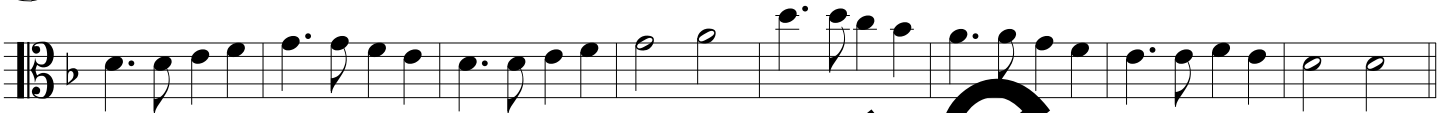
256



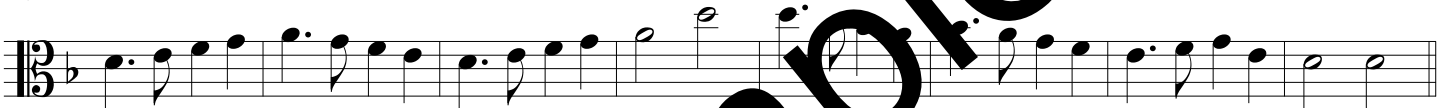
257



258



259



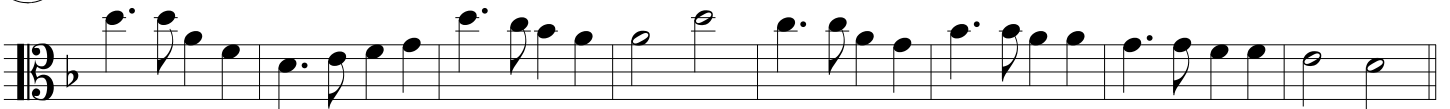
260



261



262



263



Sample

Counting in 2 Part III

Flash Card 59 & 61

Can be played with Counting in 2 Cut Time Part III

264



265



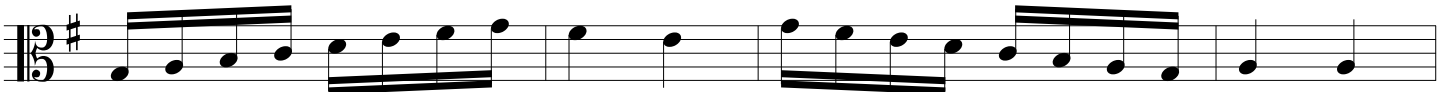
266



267



268





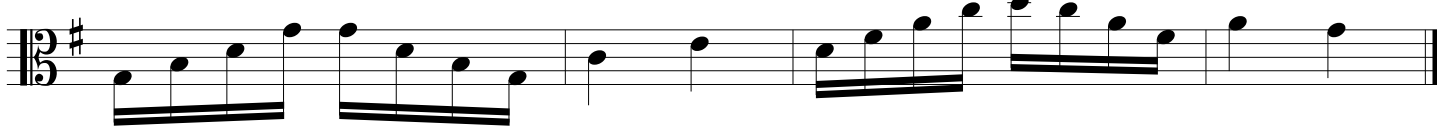
269



270



271



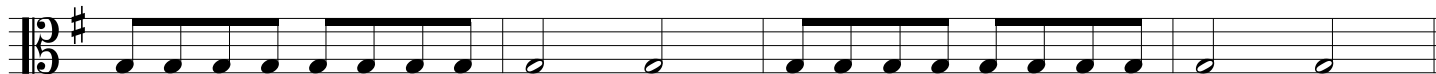
Sample

Counting in 2 Cut Time Part III

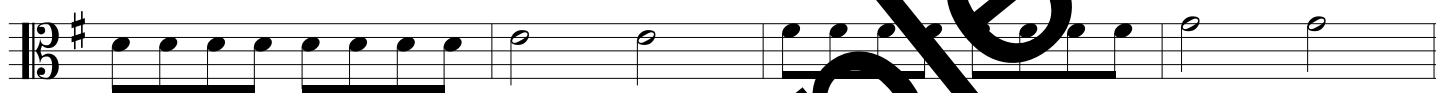
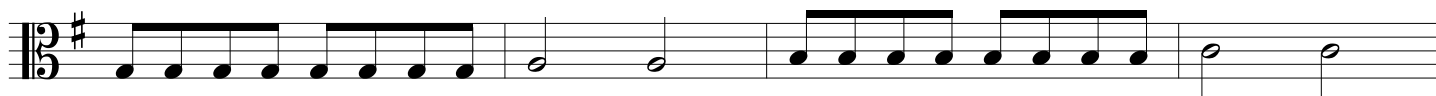
Flash Card 53 & 55

Can be played with Counting in 2 Part III

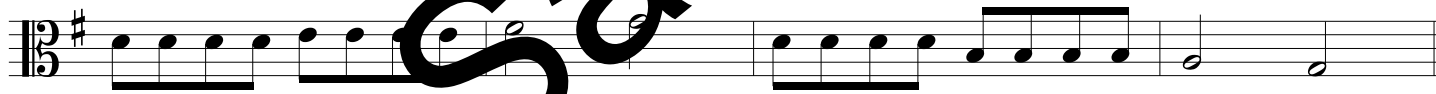
272



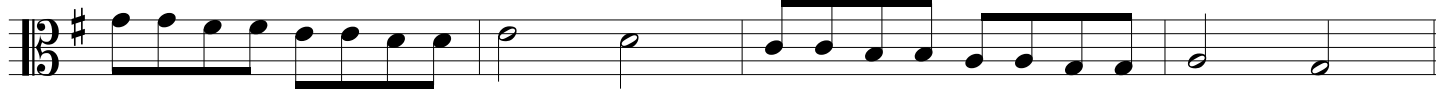
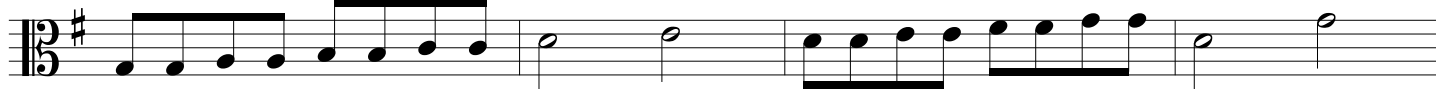
273



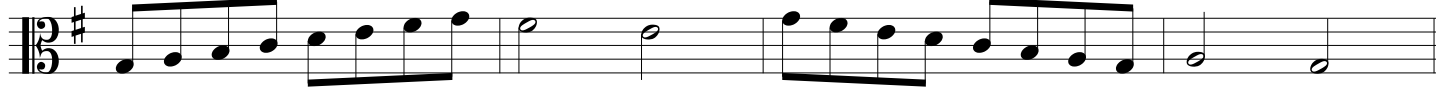
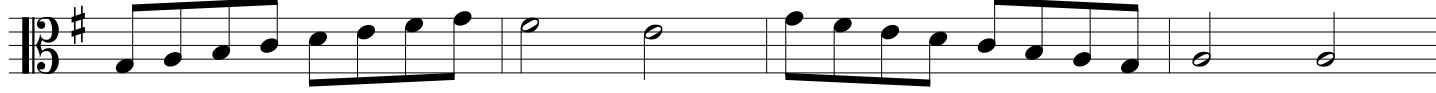
274



275



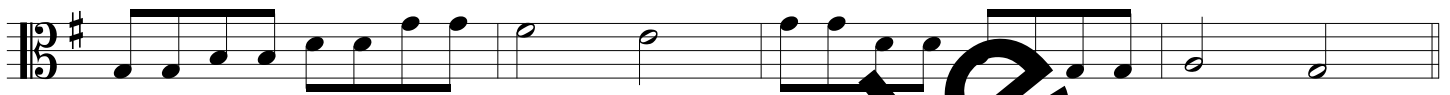
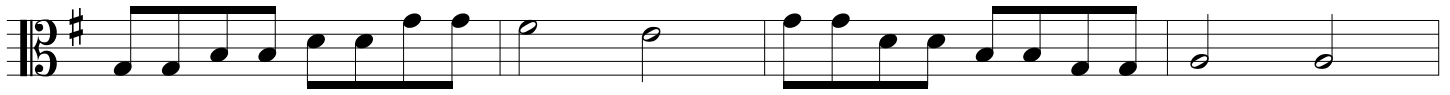
276



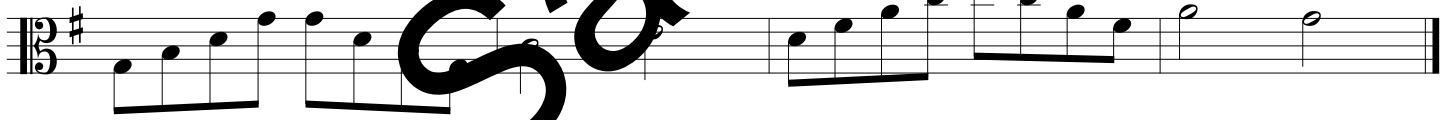
277



278



279



Sample

Dotted Quarter, 8th, 16th & 16th Triplets

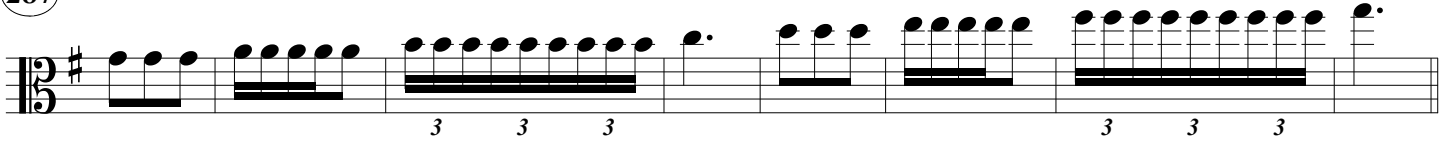
Flash Card 65, 67, 68 & 69

286



Musical notation for exercise 286, featuring a bass clef, a key signature of one sharp (F#), and a 3/8 time signature. The exercise consists of six measures. The first measure contains a dotted quarter note. The second measure contains an eighth note followed by a triplet of eighth notes. The third measure contains a triplet of eighth notes. The fourth measure contains a dotted quarter note. The fifth measure contains an eighth note followed by a triplet of eighth notes. The sixth measure contains a triplet of eighth notes followed by a dotted quarter note.

287



Musical notation for exercise 287, featuring a bass clef, a key signature of one sharp (F#), and a 3/8 time signature. The exercise consists of six measures. The first measure contains a dotted quarter note. The second measure contains an eighth note followed by a triplet of eighth notes. The third measure contains a triplet of eighth notes. The fourth measure contains a dotted quarter note. The fifth measure contains an eighth note followed by a triplet of eighth notes. The sixth measure contains a triplet of eighth notes followed by a dotted quarter note.

288



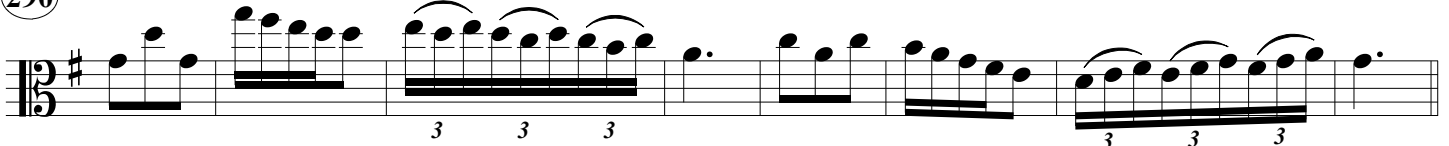
Musical notation for exercise 288, featuring a bass clef, a key signature of one sharp (F#), and a 3/8 time signature. The exercise consists of six measures. The first measure contains a dotted quarter note. The second measure contains an eighth note followed by a triplet of eighth notes. The third measure contains a triplet of eighth notes. The fourth measure contains a dotted quarter note. The fifth measure contains an eighth note followed by a triplet of eighth notes. The sixth measure contains a triplet of eighth notes followed by a dotted quarter note.

289



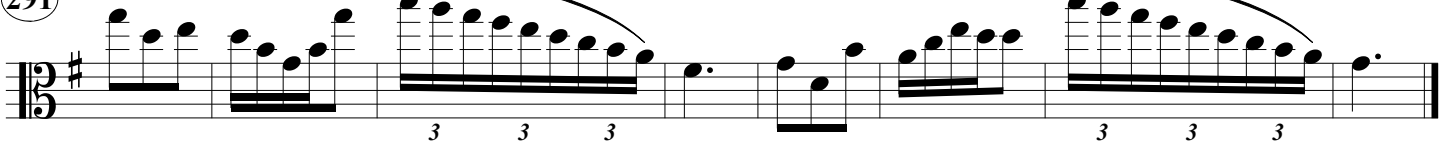
Musical notation for exercise 289, featuring a bass clef, a key signature of one sharp (F#), and a 3/8 time signature. The exercise consists of six measures. The first measure contains a dotted quarter note. The second measure contains an eighth note followed by a triplet of eighth notes. The third measure contains a triplet of eighth notes. The fourth measure contains a dotted quarter note. The fifth measure contains an eighth note followed by a triplet of eighth notes. The sixth measure contains a triplet of eighth notes followed by a dotted quarter note.

290



Musical notation for exercise 290, featuring a bass clef, a key signature of one sharp (F#), and a 3/8 time signature. The exercise consists of six measures. The first measure contains a dotted quarter note. The second measure contains an eighth note followed by a triplet of eighth notes. The third measure contains a triplet of eighth notes. The fourth measure contains a dotted quarter note. The fifth measure contains an eighth note followed by a triplet of eighth notes. The sixth measure contains a triplet of eighth notes followed by a dotted quarter note.

291



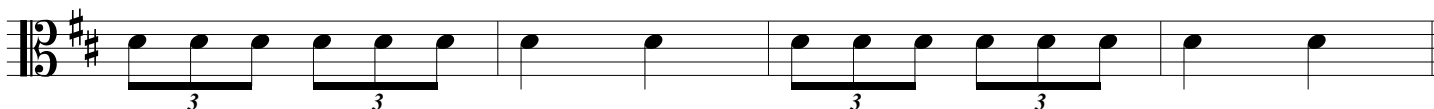
Musical notation for exercise 291, featuring a bass clef, a key signature of one sharp (F#), and a 3/8 time signature. The exercise consists of six measures. The first measure contains a dotted quarter note. The second measure contains an eighth note followed by a triplet of eighth notes. The third measure contains a triplet of eighth notes. The fourth measure contains a dotted quarter note. The fifth measure contains an eighth note followed by a triplet of eighth notes. The sixth measure contains a triplet of eighth notes followed by a dotted quarter note.

Triplets in 2

Flash Card 83 & 94

Can be played with Compound Meter in 2

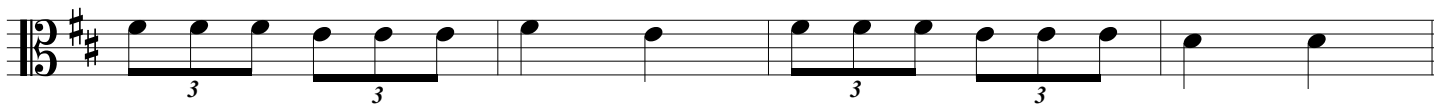
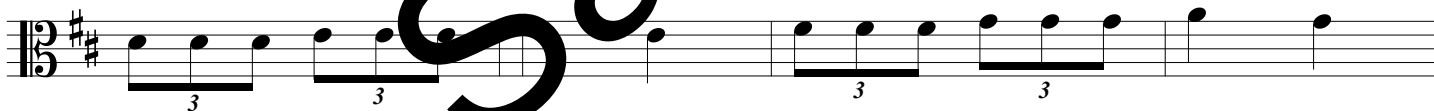
292



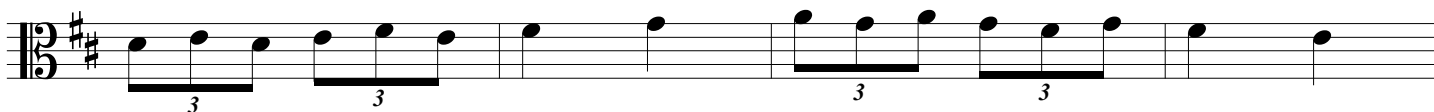
293



294



295



296

Exercise 296 consists of two staves of music in 3/8 time with a key signature of two sharps (F# and C#). The first staff contains four measures: the first two have triplets of eighth notes, and the last two have pairs of eighth notes. The second staff contains four measures: the first two have triplets of eighth notes, and the last two have pairs of eighth notes.

297

Exercise 297 consists of two staves of music in 3/8 time with a key signature of two sharps (F# and C#). The first staff contains four measures: the first two have triplets of eighth notes, and the last two have pairs of eighth notes. The second staff contains four measures: the first two have triplets of eighth notes, and the last two have pairs of eighth notes.

298

Exercise 298 consists of two staves of music in 3/8 time with a key signature of two sharps (F# and C#). The first staff contains four measures: the first two have triplets of eighth notes, and the last two have pairs of eighth notes. The second staff contains four measures: the first two have triplets of eighth notes, and the last two have pairs of eighth notes.

Sample

Compound Meter in 2

Flash Cards 71 & 72

Can be played with Triplets in 2

299



300



301



302



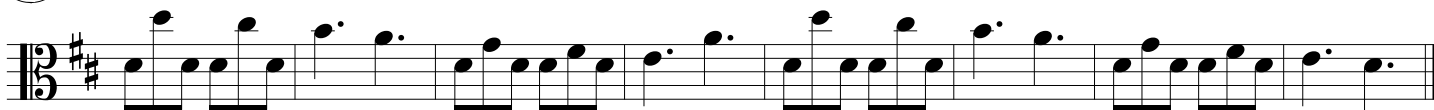
303



304



305



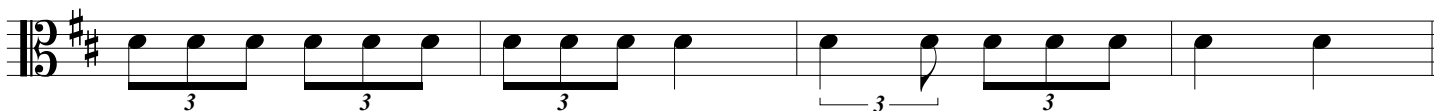
Sample

Counting in 2

Flash Card 90, 94, 95 & 96

Can be played with Compound Meter in 2

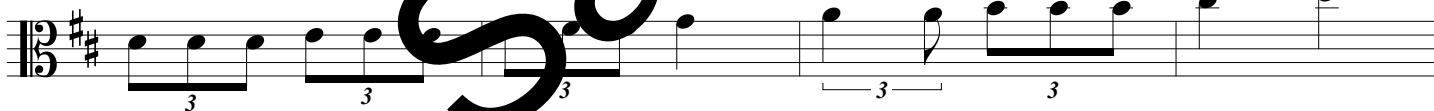
306



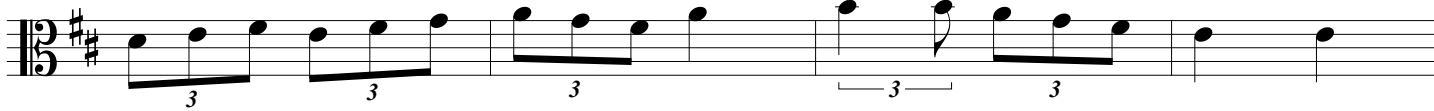
307



308



309



310

Musical notation for exercise 310, consisting of two staves of music in 3/4 time with a key signature of two sharps (F# and C#). The first staff contains six measures of music, with the first three measures each containing a triplet of eighth notes and the last three measures each containing a triplet of quarter notes. The second staff contains six measures of music, with the first three measures each containing a triplet of eighth notes and the last three measures each containing a triplet of quarter notes.

311

Emerald Gates

Musical notation for exercise 311, titled "Emerald Gates", consisting of two staves of music in 3/4 time with a key signature of two sharps (F# and C#). The first staff contains six measures of music, with the first measure containing a triplet of eighth notes, the second measure containing a triplet of quarter notes, and the remaining four measures each containing a triplet of quarter notes. The second staff contains six measures of music, with the first measure containing a triplet of eighth notes, the second measure containing a triplet of quarter notes, and the remaining four measures each containing a triplet of quarter notes.

312

Musical notation for exercise 312, consisting of two staves of music in 3/4 time with a key signature of two sharps (F# and C#). The first staff contains six measures of music, with the first two measures each containing a triplet of eighth notes and the last four measures each containing a triplet of quarter notes. The second staff contains six measures of music, with the first two measures each containing a triplet of eighth notes and the last four measures each containing a triplet of quarter notes.

Compound Meter in 2

Flash Card 71, 72 & 97

313

Can be played with Counting in 2



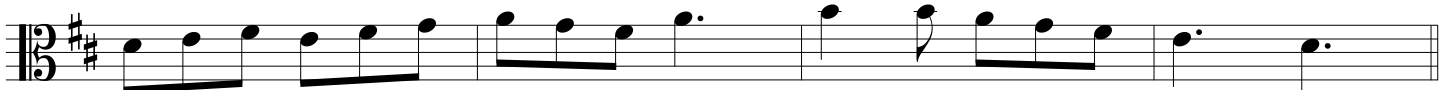
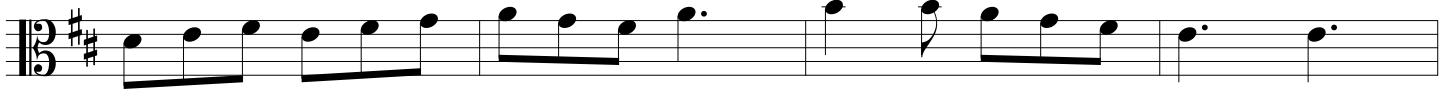
314



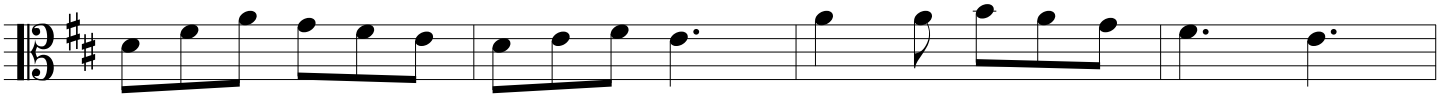
315



316

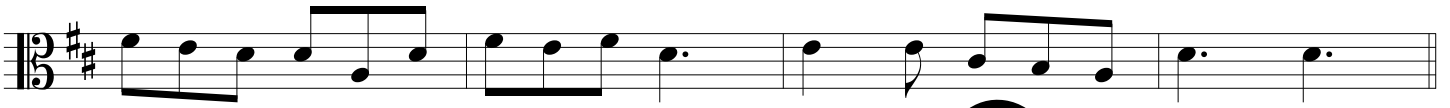


317



318

Emerald Gates



319



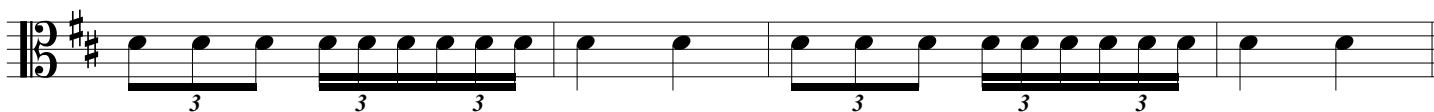
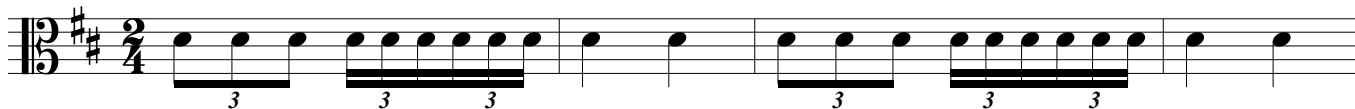
Sample

Counting in 2

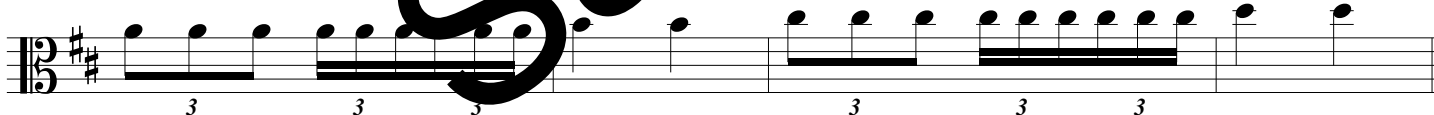
Flash Card 89 & 90

Can be played with Counting in 2 Compound Meter

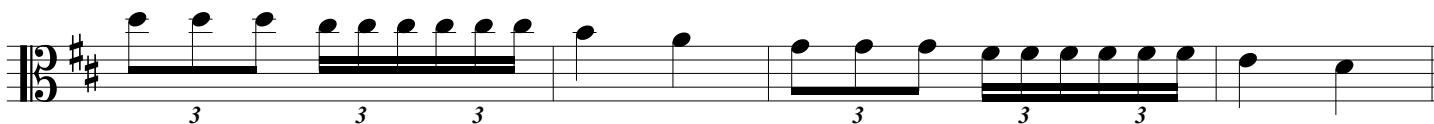
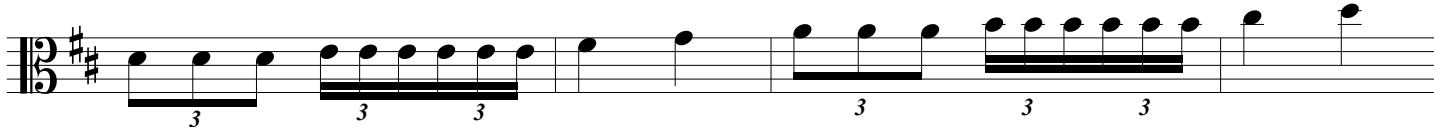
320



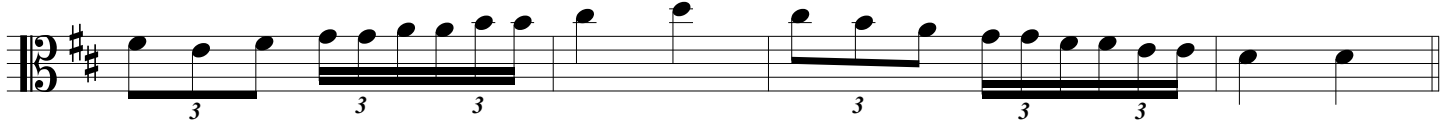
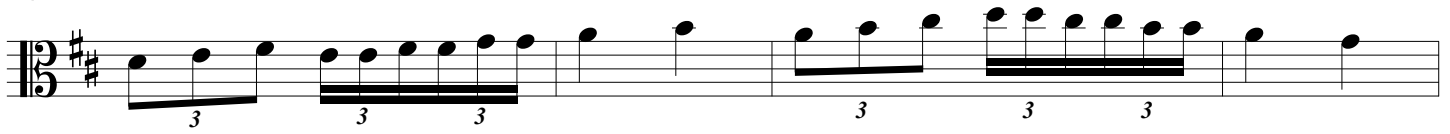
321



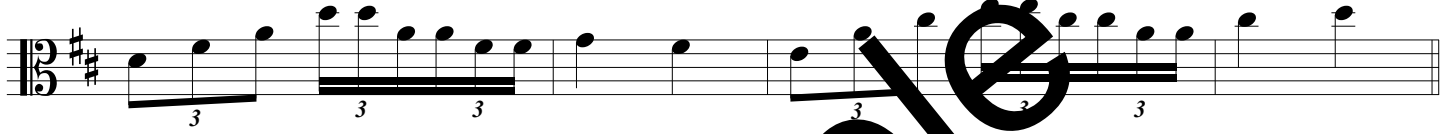
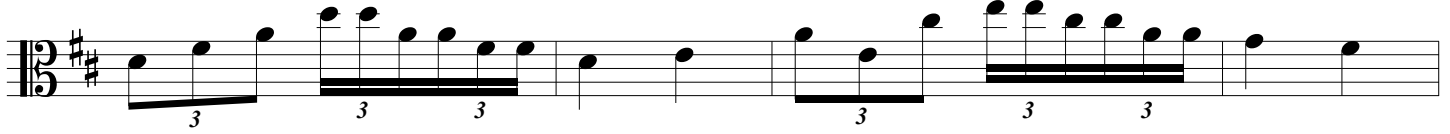
322



323



324



Sample

Compound Meter in 2

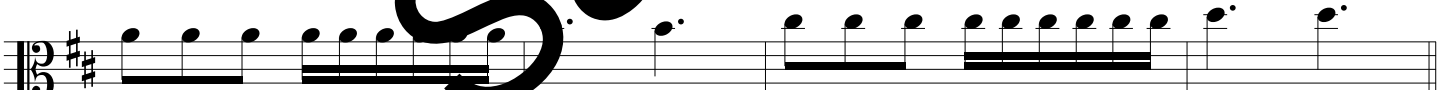
Flash Card 72 & 73

Can be played with Counting in 2

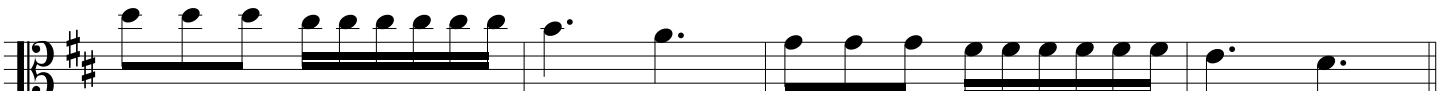
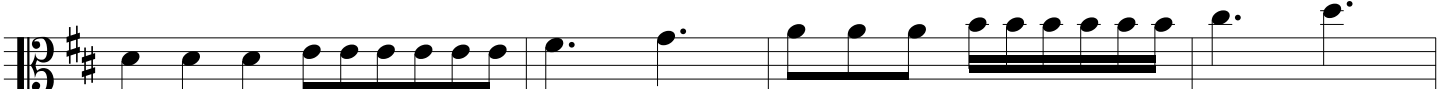
325



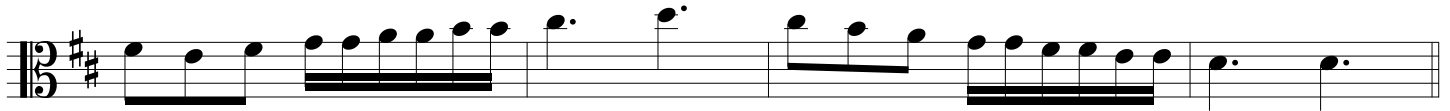
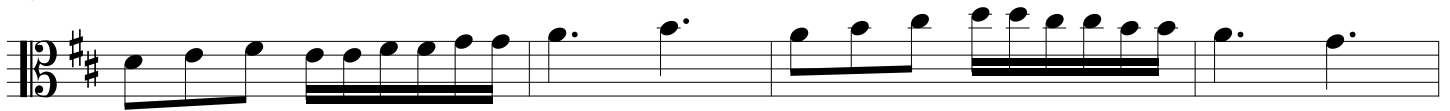
326



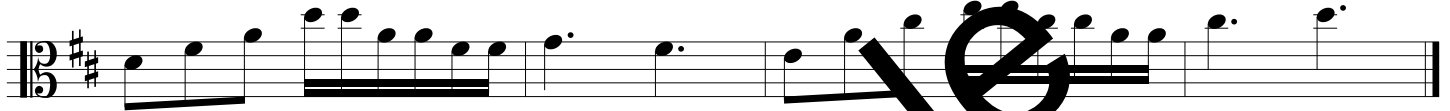
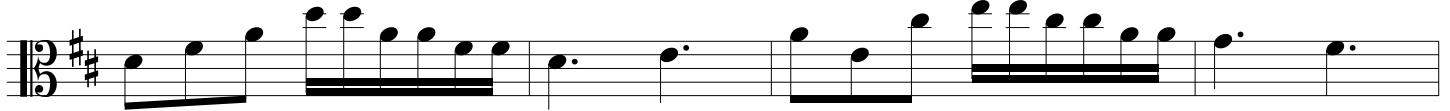
327



328



329



Sample

Counting in 3 with Triplets

Flash Card 91, 92 & 97

Can be played with Compound Meter in 3

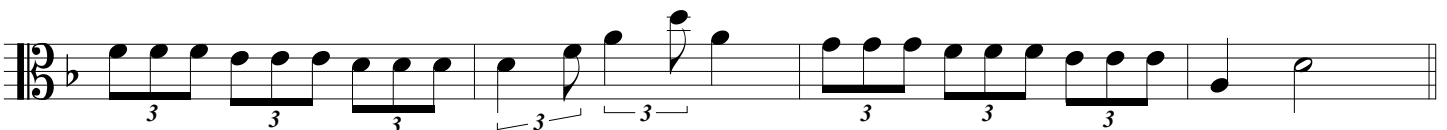
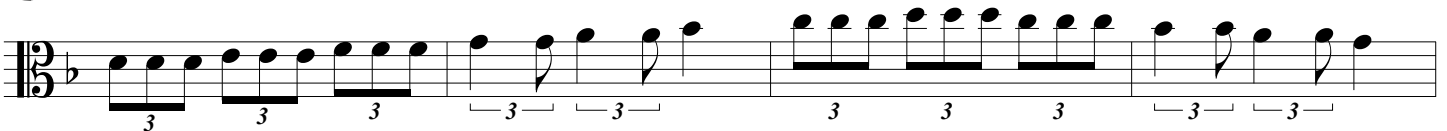
330



331



332



333

Exercise 333 consists of two staves of music. The first staff contains four measures: the first three measures feature eighth-note triplets, and the fourth measure contains two eighth-note triplets. The second staff also contains four measures: the first three measures feature eighth-note triplets, and the fourth measure contains a quarter note followed by a half note.

334

Exercise 334 consists of two staves of music. The first staff contains four measures: the first three measures feature eighth-note triplets with slurs, and the fourth measure contains two eighth-note triplets. The second staff also contains four measures: the first three measures feature eighth-note triplets with slurs, and the fourth measure contains a quarter note followed by a half note.

Sample

Compound Meter in 3

Flash Card 74, 75 & 76

Can be played with Counting in 3 with Triplets

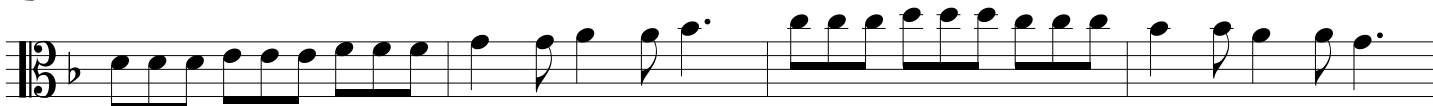
335



336



337



338

Exercise 338 consists of two staves of music in bass clef with a key signature of one flat. The first staff contains a sequence of eighth and sixteenth notes, including some beamed pairs. The second staff continues the melodic line, ending with a half note and a quarter note.

339

Exercise 339 consists of two staves of music in bass clef with a key signature of one flat. The first staff features a series of eighth notes with slurs, followed by a few quarter notes. The second staff continues the pattern, ending with a half note and a quarter note.

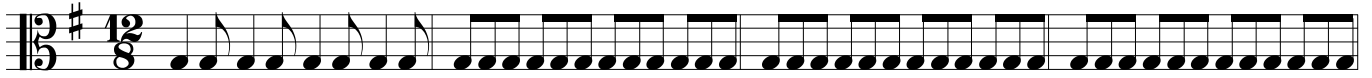
Sample

Compound Meter in 4

Flash Card 77, 78 & 79

Bach Gigue Fugue

340



341



342

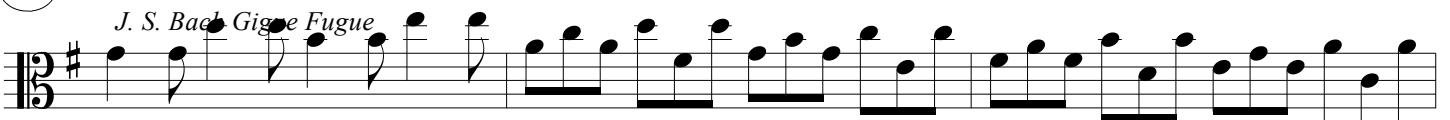


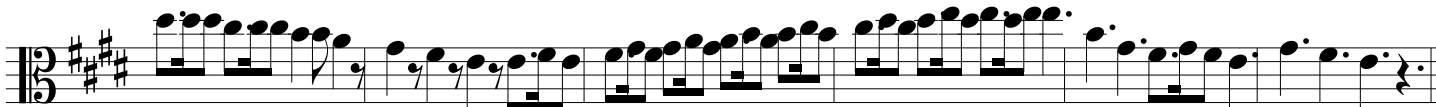
343



344

J. S. Bach Gigue Fugue





354



355

Vivaldi's Spring "Finale"



Sample